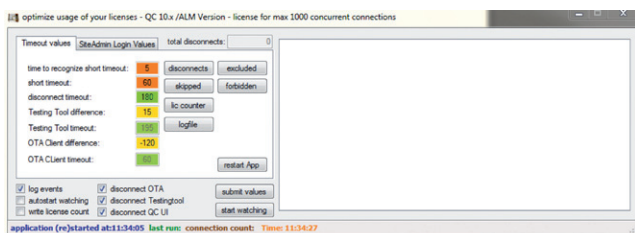


Licence Optimization Tool

short description



Main Window – Tab „Timeout values“



Description of Timeout values:

Time to recognize short timeout:

Define the time between Login and last action of User. If the time difference between user login and last action \leq this value LOT will disconnect this user after time defined in „Short timeout“. If the time difference between user login and last action $>$ this value LOT will disconnect this user after time defined in „Disconnect timeout“.

Short timeout:

First available disconnect timeout, only used by LOT if the time difference between user login and last action \leq „Time to recognize short timeout“

Disconnect Timeout:

The „normal“ disconnect timeout for QC UI connections (connections via IExplorer or QC Explorer), user is disconnected after inactivity of $<x>$ minutes.

Testing tool difference:

Define a timeout difference for testing Tool connections (integer values), positive and negative values possible.

Testing tool timeout:

calculated by tool (Disconnect Timeout + Testing Tool difference = Testing tool timeout)

OTA Client difference:

Define a timeout difference for OTA connections (integer values), positive and negative values possible.

OTA Client timeout:

calculated by tool (Disconnect Timeout + OTA Client difference = OTA Client timeout)

Timeouts for each connection type

1. Timeout for QC UI Connections (Connections via IExplorer or QC Explorer)
2. Timeout for Testing Tool connections (QTP, WinRunner, Loadrunner etc)
3. Timeout for OTA connections

The timeout for QC UI connections is the basic value for calculating the other timeouts.

The timeout values in detail:

Time to recognize short timeout:..... set by user

Short timeout:.....set by user

Disconnect timeout:.....set by user (standard timeout for QC UI connections)

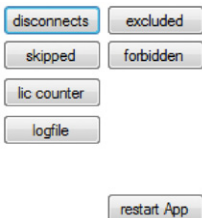
Testing tool difference:.....set by user, difference to „Disconnect timeout“

Testing tool timeout:.....calculated, no direct input

OTA Client difference:.....set by user, difference to „Disconnect timeout“

OTA Client timeout:.....calculated, no direct input

Button description



Button „disconnects“ Show the list of all disconnects handled by LOT (simple text file, opened with Notepad)

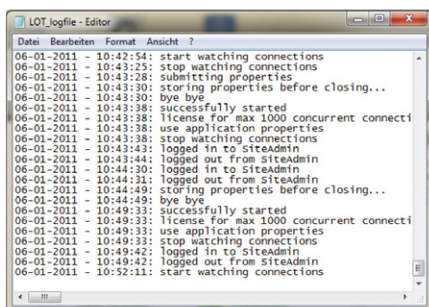
Button „excluded“ Define a list of excluded users (simple text file with QC user names, one name per line), connections for these users are disconnected after 24h and not within defined timeout

Button „skipped“ Show the disconnects for excluded users (disconnects after 24 hours of inactivity)

Button „forbidden“ Define a list of forbidden users (simple text file with QC user names, one name per line), QC UI connections for these users are disconnected immediatly, usable for „technical“ or „anonymous“ users

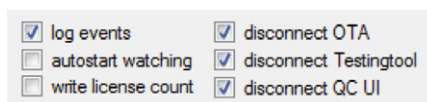
Button „lic counter“ Show the connection count for each check, only available if „write license count“ in first tab is checked Button „logfile“

Show the application logfile



Button „restart App“ -> Restart LOT

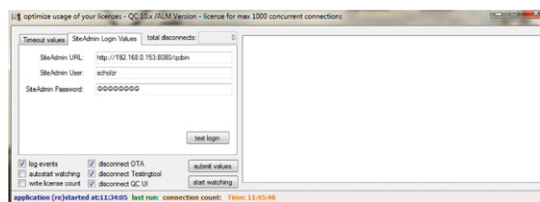
Checkbox Description



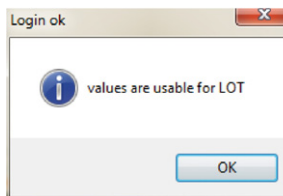
Log events:..... write application log
Autostart watching:..... start watching connections automatically after LOT start

Write license count:..... write license count
Disconnect OTA:..... disconnect OTA sessions
Disconnect Testingtool:..... disconnect TestingTool sessions
Disconnect QC UI:.....disconnect QC UI sessions

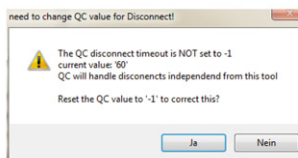
Main Window – Tab „SiteAdmin Login Values“



Type in your Login values to SiteAdmin on this page and press „test login“.



This informs you that Login Values are correctly set.



You will get a hint to reset the SiteAdmin parameter „WAIT_BEFORE_DISCONNECT“ if the value isn't set to „-1“. The tool will set the value automatically if you press „Yes“ („Ja“) in the Dialog!

Status bar



Informations available (left to right):

-Time of (Re)start of LOT
-Time of last connection check
-Connection count on last check
-Current time

Contact

Michael Schröer
Sales Manager Germany
Office Berlin
+49 30 25 89 40 58
mschroeer@proficom.de

Lars Gemmi
Sales Manager
Southern Germany
+49 151 18 82 67 74
lars.gemmi@proficom.de

